



DISCOVER. CONNECT. INSPIRE.

ASHBI
RETREAT 2024

January 26 – 27, 2024

Lake Biwa Otsu Prince Hotel

Organizer | **Yasuhiro Murakawa**

Venue | **Lake Biwa Otsu Prince Hotel**

4-7-7, Nionohama, Otsu City Shiga, 520-8520 Japan

**Getting to the Hotel Venue****01. by chartered bus**

Transportation between Kyoto University and Lake Biwa Otsu Prince Hotel will be by chartered bus. As a general rule, if you do not use that bus, you will be responsible for your own transportation expenses. See **P8 - P11** for the bus number you will be boarding.

02. by train

The closest station to the hotel is JR Otsu Station, from which you can take the hotel's free shuttle bus. It takes about 10 minutes by bus from Otsu Station to the hotel.



Bus Stop & Schedule

**03. by car**

On-site parking for approximately 500 vehicles. 500 yen per night

**Contact Information (for Emergency)**

Meetup contact (9:00-10:00) 080-1475-7233

ASHBi Office 075-753-9882

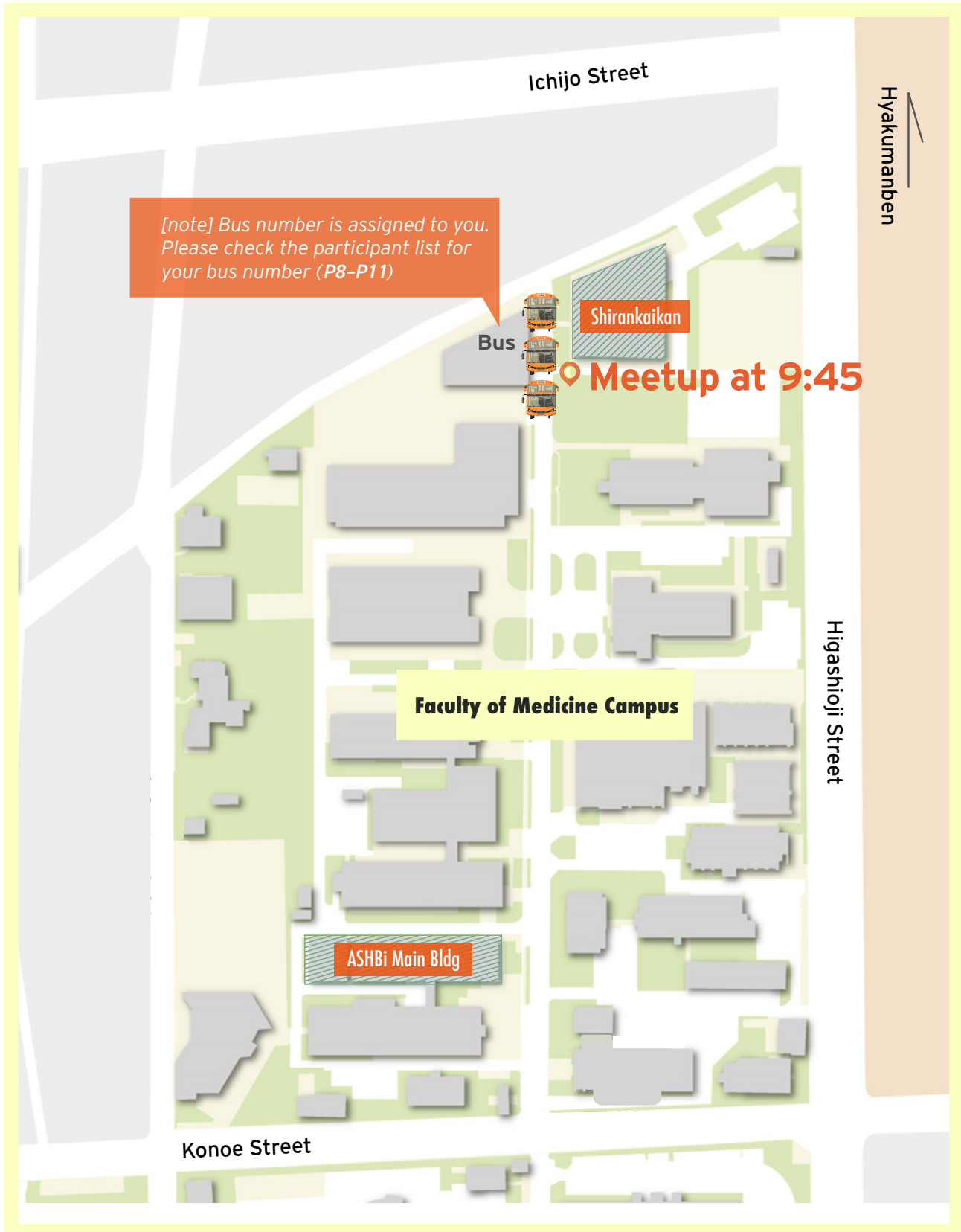
Lake Biwa Otsu Prince Hotel 077-521-1111

Meetup Time & Place

Meetup Time | **9:45** on Friday, 26 January

Bus will depart at 10:00, any latecomers must travel to the venue at their own expense

Meetup contact for emergency (9:00 - 10:00) 080-1475-7233



DAY 1 9:45 – 21:00		Jan 26 FRI
10:00	Departure at Kyoto University	
10:40	Reception	
11:00	Opening Remarks	Hall 1
11:10 – 12:30	Session 1: Guest Talks	
	chair: Y. Murakawa	
	11:10 Azusa Inoue RIKEN IMS	
	11:50 Shinpei Kawaoka Tohoku U.	Hall 1
12:30 – 13:30	Lunch Discussion	
		Hall 1
13:30 – 15:30	Session 2: ASHBi Researcher Presentations	
	chair: H. Ueno	
	13:30 Shusei Fujioka Ueno G	
	14:00 Kuan-Ting Ho IsaG	
	chair: Y. Hiraoka	
	14:30 Vargas Meza Xanat Fujita G	
	15:00 Yusuke Imoto Hiraoka G	Hall 1
15:30 – 16:00	Break & Check-in	
16:00 – 16:40	Session 3: Guest Talk	
	chair: Y. Murakawa	
	16:00 Koshi Imami RIKEN IMS	Hall 1
16:40	Break	
17:00 – 19:00	Poster Session	
	Poster Session 1 (Odd #)	Hall 2
19:00 – 21:00	Dinner / Poster	Hall 2
21:00 – 23:00	Night Session	MIYUKI

DAY 2 9:00– 17:45

Jan
27
SAT

7:00 –

Breakfast & Check-out

VIONA

9:00 – 11:00

Poster Session

Poster Session 2 (Even #)

Hall 2

11:00 – 11:10

Photo shoot

Hall 2

11:10 – 12:10

Session 4: ASHBI PI Talks

chair: Y. Murakawa

11:10 **Guillaume Bourque**11:40 **Mitinori Saitou**

Hall 1

12:10 – 13:00

Lunch Discussion

Hall 1

13:00 – 14:00

Session 5: Primate Research at ASHBI

chair: Y. Murakawa

Tomoyuki Tsukiyama | PRIME

Panel Discussion

Moderator: **Y. Murakawa**

Hall 1

14:00

Break

14:15 – 16:25

Session 6: ASHBI Researcher Presentations

chair: M. Yanagita

14:15 **Jungmin Oh** | Amemori G14:45 **Yusuke Murase** | Saitou G

chair: S. Seirin-Lee

15:15 **Raku Son** | Murakawa G15:50 **Mari Ohnuki** | Bourque G

Hall 1

16:25

Break

16:35 – 16:55

Session 7: Feedback and Discussion

16:25

Feedback and Discussion on presentation at Retreat 2024

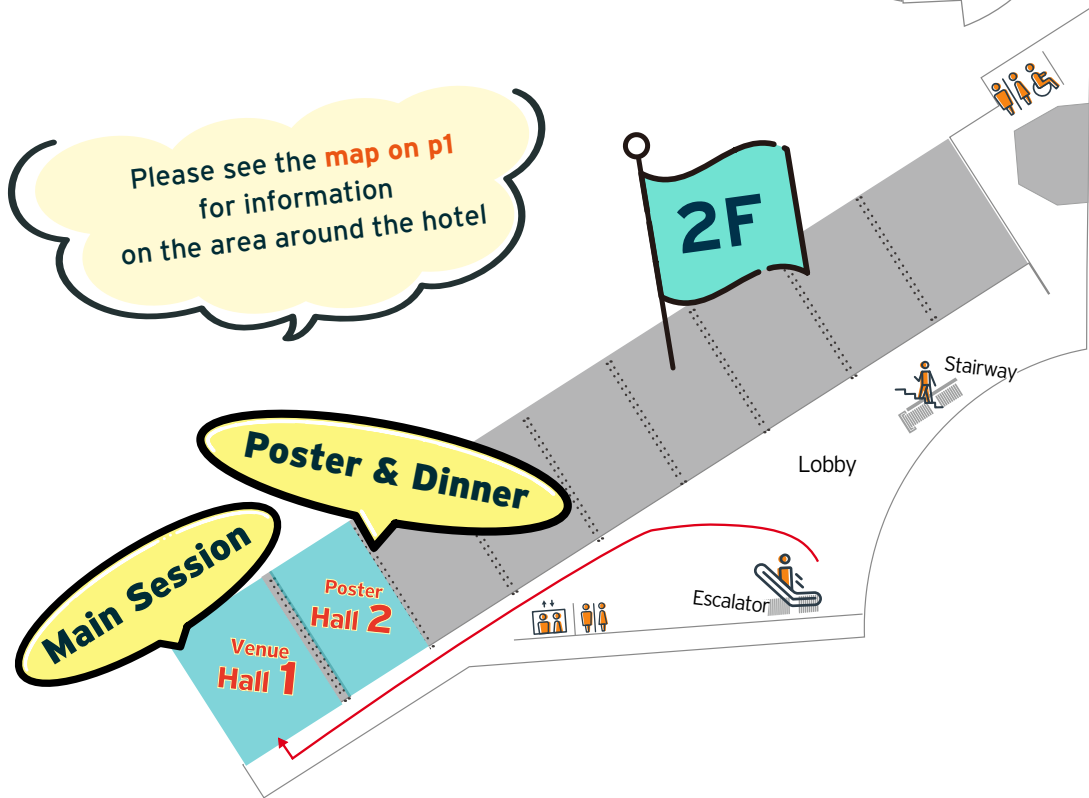
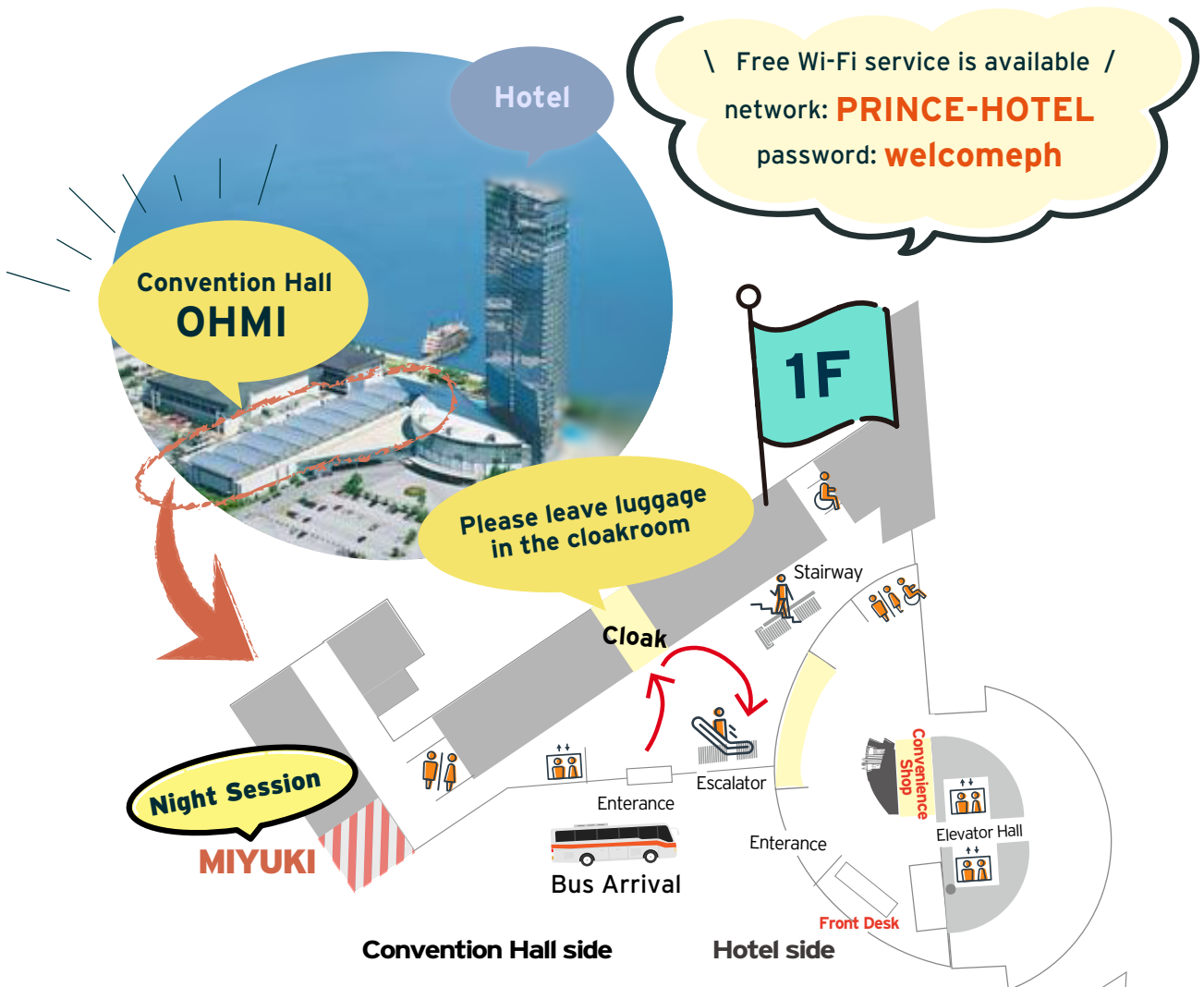
16:55

Award Session & Closing Remarks

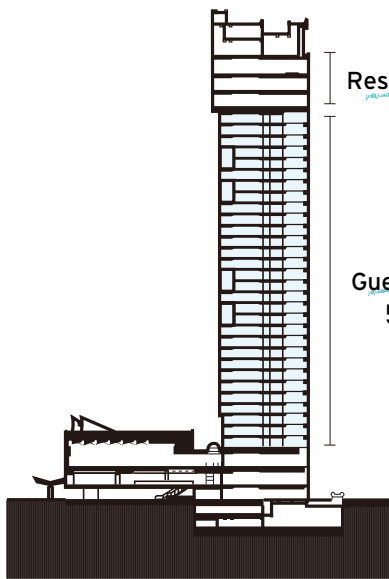
Hall 1

17:45

Depart Lake Biwa Otsu Prince Hotel



Hotel Map [Accommodation]



Restaurants & Bar
36F - 38F

Guest Room
5F - 35F

BREAKFAST

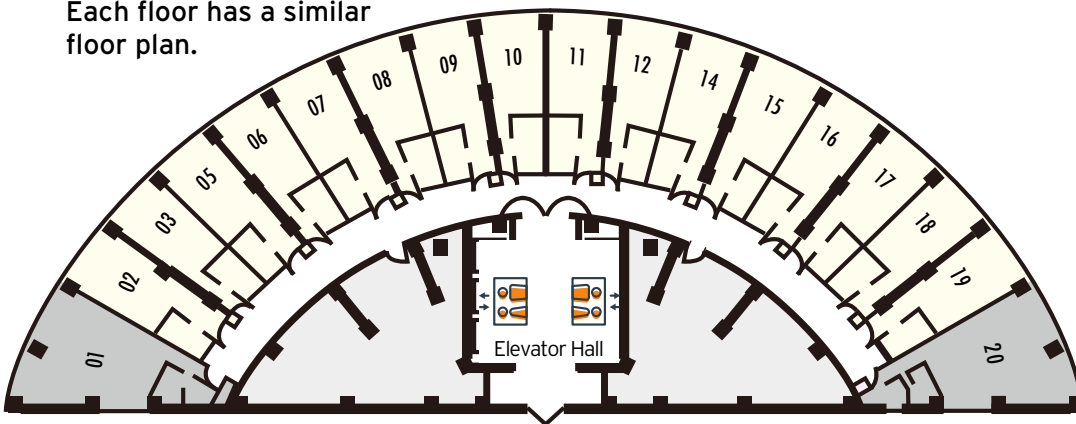


Lake View Dining Viona
[37F] starting at **7:00** a.m.

*Seat reservations are not available,
so please arrive well in advance!*

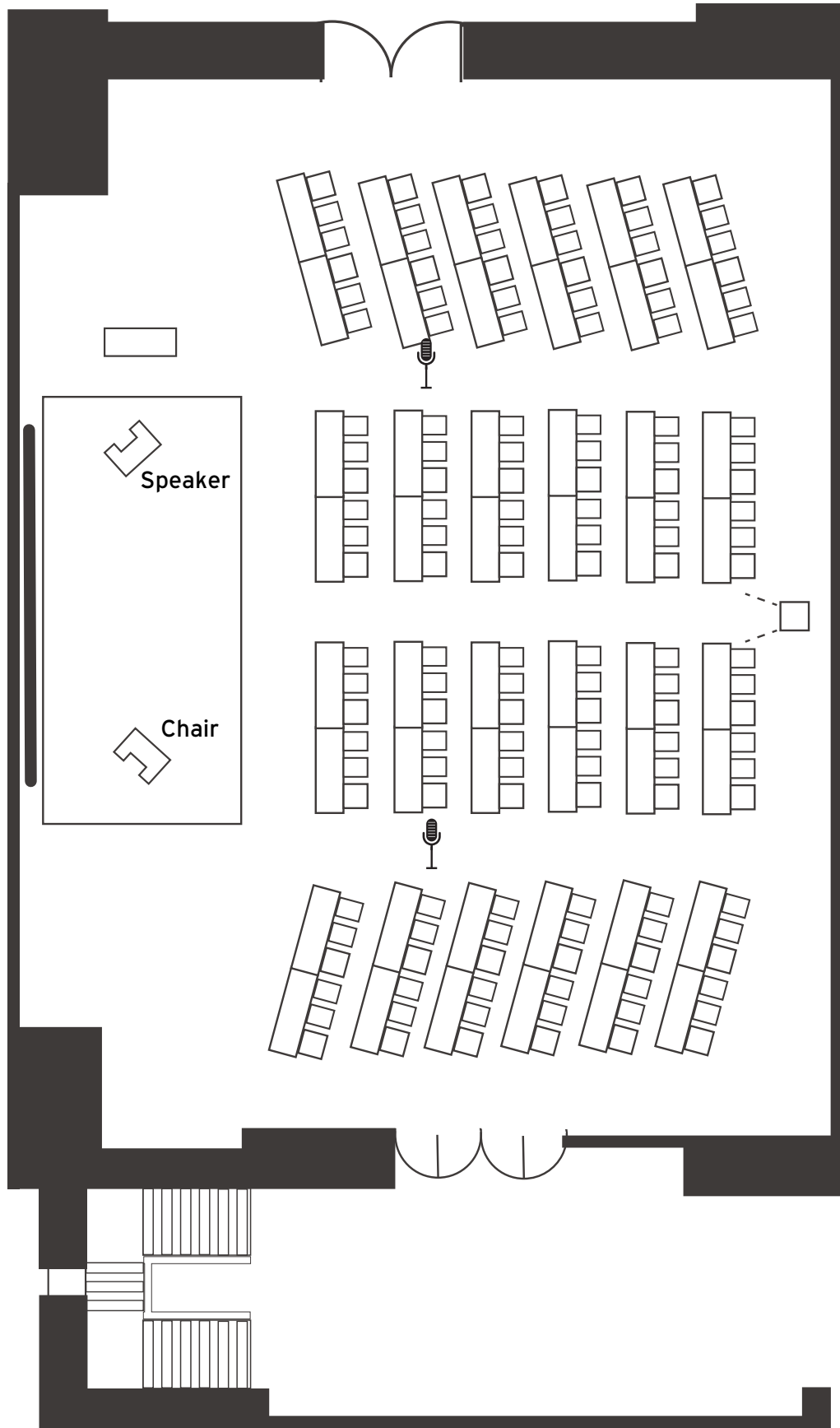
GUEST ROOMS

Please check the last two digits of the room number.
Each floor has a similar floor plan.

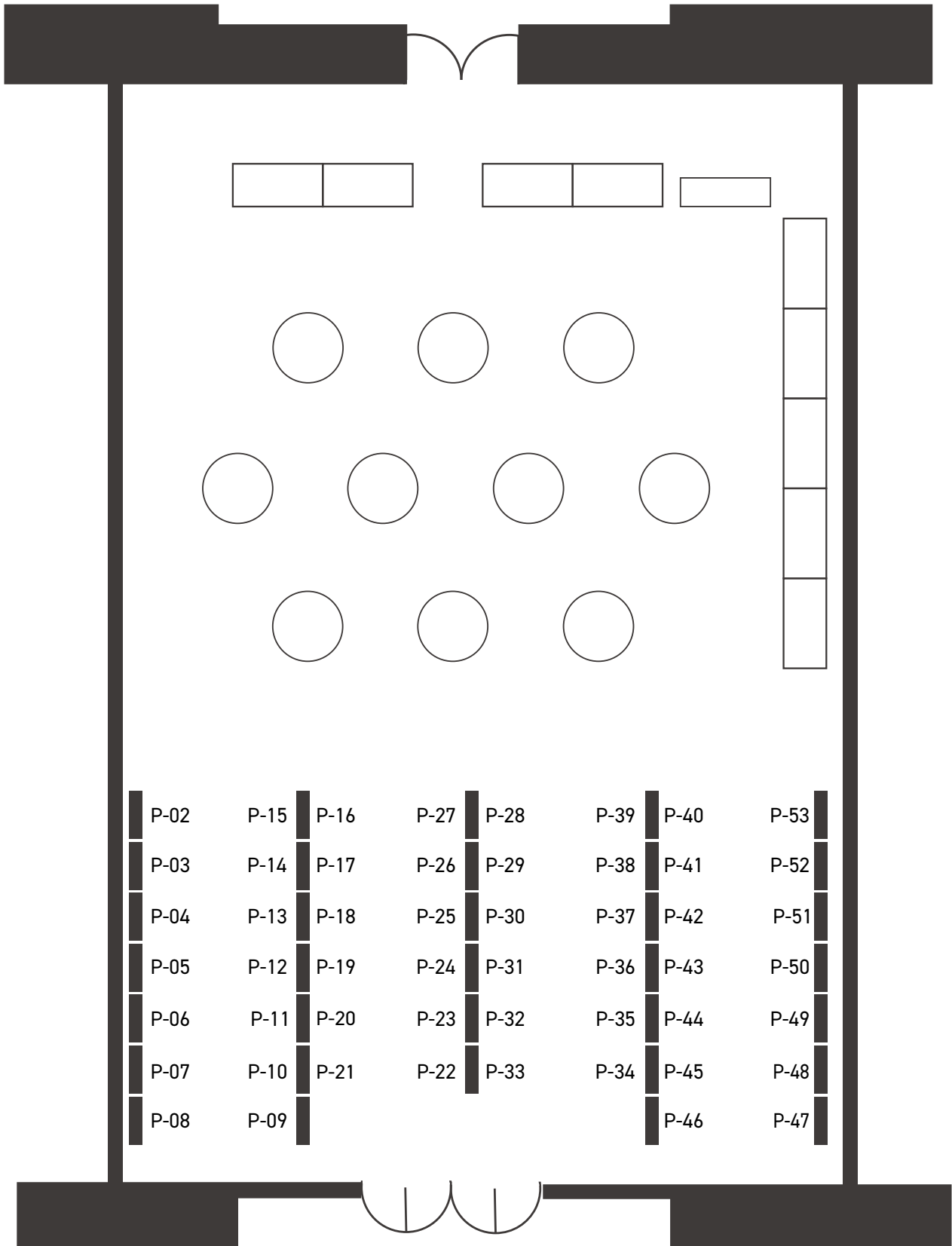


\ Free Wi-Fi service is available /
network: **PRINCE-HOTEL**
password: **welcomeph**

Hall 1 Session Venue



Hall 2 Poster & Dinner



Awards for the ASHBI Retreat 2024

1. Best Oral Presentations

Voted by **PIs only**

Evaluated based on the scientific content, the graphical presentation, and the discussion

2. Best Poster Presentations

Voted by **PIs only**

Evaluated based on the scientific content of the poster, the clarity of the presentation, and the content of the discussion

3. Most Outstanding Participant

Voted by **Everyone**

Evaluated based on Q&A and the ability to bring fun and excitement to the event

PIs

After Session 6, please submit the voting form with your choice of oral presentation, poster presentation, and the most outstanding participant.



Voting Form for PIs

Non-PIs

After Session 6, please submit the voting form with your choice of the most outstanding participant.



Voting Form for non-PIs



Oral Presentations

Guest Lecturers

No	Name	Affiliation	Title
G-01	Azusa INOUE	RIKEN IMS	Genomic imprinting regulated by maternal Polycomb complexes
G-02	Shinpei KAWAOKA	Tohoku Univ	Our challenges to understand cancer cachexia, decode enhancers, and reveal multi-omics changes in our daily lives
G-03	Koshi IMAMI	RIKEN IMS	Decoding the nascent proteome using mass spectrometry

ASHBi PI Talks

No	Name	Affiliation
S-01	Guillaume BOURQUE	Bourque G
S-02	Mitinori SAITOU	Saitou G

ASHBi Primate Research Session

No	Name	Affiliation
S-03	Tomoyuki TSUKIYAMA	ASHBi-PRIME

Oral Presenters

No	Name	Affiliation	Title
O-01	Shusei FUJIOKA	Ueno G	Single-cell multiomics revealed a post-Tfh phase of CD4+ T cells in human lymphoid organs
O-02	Kuang-Ting HO	Isa G	Quantifying post-saccadic macroscopic traveling brain waves in marmosets with graph-based algorithm
O-03	Xanat VARGAS MEZA	Fujita G	Attitudes toward medical care and preparations for the end of life in contemporary Japan: evidence from social media
O-04	Yusuke IMOTO	Hiraoka G	Comprehensive Noise Reduction of Single-Cell Data with RECODE
O-05	Jungming OH	Amemori G	Selective silencing of the ventral striatum-ventral pallidum pathway enhances motivational states under approach-avoidance conflict in nonhuman primates
O-06	Yusuke MURASE	Saitou G	<i>In vitro</i> reconstruction of epigenetic reprogramming in the human germline
O-07	Raku SON	Murakawa G	Spatially resolved full-length RNA sequencing at single-cell resolution
O-08	Mari OHNUKI	Bourque G	Evolution of gene regulation by primate-specific transposable elements

Poster Presentations

Odd #s| 17:00 - 19:00 on January 26 (Day 1)

Even #s| 09:00 - 11:00 on January 27 (Day 2)

No	Name	PI G	Title
P-01			
P-02	Sofiane HAMIDI	Alev	Comparative analysis of human and non-human primate (NHP) axial development
P-03	Rolf Tore ERIKSSON	Alev	Axioloid v3.0, an in vitro model of human axial development containing neural tube, somites and notochord
P-04	Keun-Tae KIM	Alev	Towards reconstituting peri-gastrulation primate development <i>in vitro</i>
P-05	Yi ZHANG	Alev	Reconstituting non-human primate (NHP) axial development <i>in vitro</i>
P-06	Jiwon BU	Alev	In silico dissection of human and non-human primate early embryonic development
P-07	Sirajam MUNIRA	Alev	In situ hybridization chain reaction: a powerful tool for visualization of gene expression in embryo models
P-08	Rikako KATO	Amemori	Integration of eye position and saccade direction information for sequential actions in caudate nucleus neurons
P-09	Satoko AMEMORI	Amemori	Dampened top-down influence in the primate fronto-cingulo-striatal network underlying negative bias in conflict decision-making
P-10	Xun CHEN	Bourque	A new transposable element classification and annotation platform to understand the sequence and regulatory evolution in the primate lineage
P-11	Zicong ZHANG	Bourque	Massively parallel assays for decoding the site-specific function of cis-regulatory sequences
P-12	Masanaga MUTO	Ema	Exploring Developmental Potential of Inner Cell Mass in Cynomolgus Monkeys
P-13	Shoma MATSUMOTO	Ema	Reconstitution of cynomolgus monkey endometrium-like structure to mimic the implantation <i>in vitro</i>
P-14	Naoya TORIU	Yanagita	Non-human primates mutant for NPHP1 recapitulate human juvenile nephronophthisis
P-15	Takafumi ICHIKAWA	Hiiragi	Polar cell alignment drives mouse epiblast patterning and morphogenesis
P-16	Mei MAKINO	Hiiragi	Light-sheet microscopy of cleared uteri reveals the coordination between embryo and uterine development
P-17	Jun OKAMOTO	Hiraoka	Spatio-temporal reconstruction of gene expression on the human axioloid using optimal transport theory
P-18	Yuya TOKUTA	Hiraoka	Cross-species analysis of gene expression data using Gromov-Wasserstein optimal transport theory

Odd #s| 17:00 - 19:00 on January 26 (Day 1)

Even #s| 09:00 - 11:00 on January 27 (Day 2)

No	Name	PI G	Title
P-19	Reona YAMAGUCHI	Isa	Cortical network associated with recovery from spinal cord injury in macaque monkeys
P-20	Chih-Yang CHEN	Isa	Topographic organization of the saccade related areas in dorsal frontal cortex of common marmoset
P-21	Yang FANG	Isa	Clarification of pathophysiology of neuropsychiatric disorders of genome-edited macaque monkeys
P-22	Xiyao YU	Isa	Visual awareness-related neural activity changes in prefrontal cortex after V1 lesion
P-23	Longxiang ZHANG	Isa	Elucidating genetic mechanisms underlying large-scale plasticity in the adult primate brain during the recovery from spinal cord injury
P-24	Yiping SUN	Isa	Contribution of the reticulospinal tract to hand dexterity in non-human primates
P-25	Yuxin ZHANG	Isa	How does the superior colliculus encode visual information in blindsight monkeys?
P-26	Ziguo LAN	Isa	Neuroimaging analysis in nonhuman primate model of psychosis
P-27	Kazuhiro TAKEUCHI	Murakawa	An atlas of functional elements in the human genome
P-28	Raku SON	Murakawa	Spatially resolved full-length RNA sequencing at single-cell resolution
P-29	Sho SEKITO	Murakawa	Systematic identification of novel transcripts in renal cell carcinoma
P-30	Yotaro OCHI	Ogawa	Chromatin accessibility profiling demonstrates epigenetic heterogeneity in acute myeloid leukemia
P-31	Tomonori HIRANO	Ogawa	Origin of synchronous or metachronous multiple pancreatic cancers
P-32	Hirona MAEDA	Ogawa	Clonal expansion in bile duct associated with chronic inflammation
P-33	Masahiro NAGANO	Saitou	The mitotic STAG3-cohesin defines male germline nucleome
P-34	Yoshiaki NOSAKA	Saitou	TBA
P-35	Hanbo WANG	Saitou	Mechanism of Human Primordial Germ-Cell Specification and Segregation From the Somatic Lineage
P-36	Steffen PLUNDER	Seirin	TBA

Poster Presenters

Odd #s| 17:00 - 19:00 on January 26 (Day 1)

Even #s| 09:00 - 11:00 on January 27 (Day 2)

No	Name	Affiliation	Title
P-37	Takahiro HIRAGA	Seirin	Development of a machine learning tool for segmentation of human skin eruptions
P-38	Tamaki WAKAMOTO	Seirin	Optimal therapy for lung and brain cancer using intra- and inter-cellular networks
P-39	Shusei FUJIOKA	Ueno	Single-cell multiomics revealed a post-Tfh phase of CD4+ T cells in human lymphoid organs
P-40	Naila SHINWARI	Ueno	Comprehensive Assessment of SARS-CoV2 Spike Specific Regulatory Cells (Tregs) and Th17 Cells Following SARS-COV-2 mRNA Vaccination and Infection
P-41	Yuki MASUO	Ueno	Clonal associations of Tph subsets and local maintenance in rheumatoid arthritis
P-42	Xinxin XUE	Ueno	Inhibition of COVID-19 vaccine response by the presence of low-affinity cross-reactive T cells
P-43	Shinchi OSHIMA	R Yamamoto	Decoding cynomolgus macaque hematopoiesis
P-44	Youngeun BEEN	R Yamamoto	Tracking self-renewal and differentiation of single hematopoietic stem cell through DNA recording technology
P-45	Moyra LAWRENCE	T Yamamoto	GENERATING MOUSE TOTIPOTENT CELLS <i>IN VITRO</i>
P-46	Kazunori SUNADOME	T Yamamoto	Profiling cell fate in 3D tissue with whole-mount in situ sequencing
P-47	Go OKUI	Fujita	The Prospect of Rapid Autopsy Program in Kyoto University: Report and Recommendations
P-48	Taro TSUJIMURA	SignAC	Characterizing single-molecule open chromatin patterns around CTCF binding sites with Fiber-seq
P-49	Akira HIROTA	SignAC	Towards single-molecule multi-omics analysis
P-50	Shoko TARUMOTO	SignAC	A novel method for massively parallel DNA methylome analysis via mono-adaptor tagmentation
P-51	Masataka NAKAYA	PRiME	Generating transgenic non-human primates via the piggyBac transposon system
P-52	Rio TSUTSUMI	Saitou	TBA
P-53	Takumi WADA	SignAC	The applications of information theory to biological systems such as signal transduction and cell differentiation



CONTACT US

ASHBi Office

Phone: 075-753-9882

E-mail: ASHBi-info@mail2.adm.kyoto-u.ac.jp

