

ASHBI RETREAT 2025



JAN. 31 ▶▶▶ FEB. 1



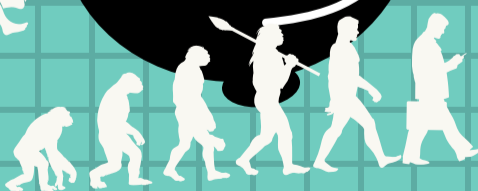
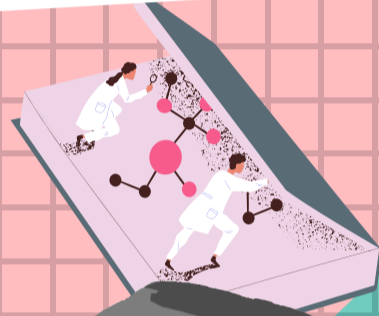
LAKE BIWA OTSU PRINCE HOTEL

Guest Speakers

Nozomu Yachie | Uni. of British Columbia / Osaka Univ.
Satoshi Yamazaki | The Uni. of Tokyo



$$\begin{aligned}V &= V_0 + at \\ X &= X_0 + v_0t + \frac{1}{2}at^2 \\ V &= v_0 + at \\ X &= X_0 + \frac{1}{2}(v_0 + v)t\end{aligned}$$



Please register through your lab.
Poster Session to be held!

Organizer Ryo Yamamoto

Contact ashbi-event@mail2.adm.kyoto-u.ac.jp

